

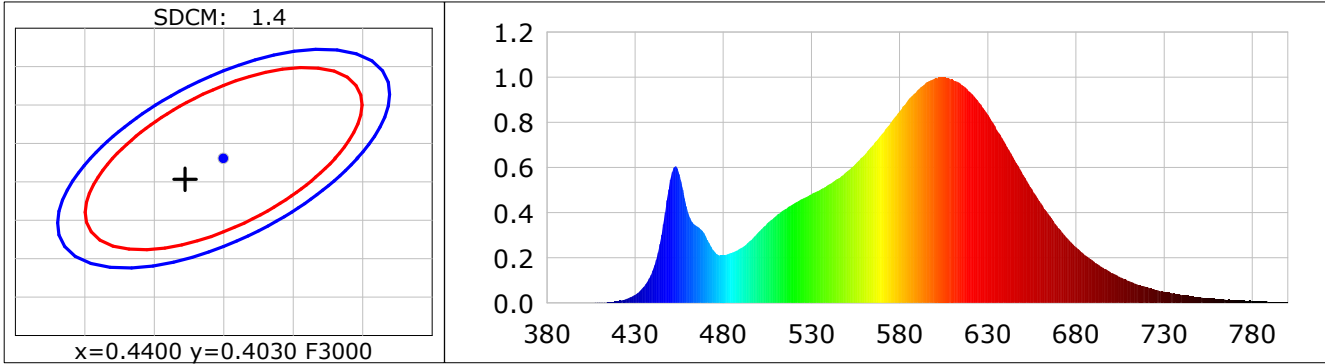
**Lightsource Test Report**

**Product Infomation**

Product Category: LED STRIP	Product Type: LED STRIP
Product Spec: 21059602440549	Product Number: 279
Manufacturer: TECSOLELED S.L.	Buyer: TECSOLELED S.L.

**CIE Colorimetric Parameters**

Chromaticity coordinates:  $x=0.4372$   $y=0.4003$   $u(u')=0.2524$   $v=0.3466$   $v'=0.5199$   
 CCT:  $T_c=2964K$  ( $duv=-0.00154$ ) Color Ratio:  $R=0.234$   $G=0.738$   $B=0.028$   
 Peak Wavelength: 603.0nm Half Bandwidth: 120.6nm  
 Dominant Wavelength: 583.5nm Color Purity: 0.514  
 CRI:  $R_a=82.9$ ,  $avgR(1\sim14)=78.0$ ,  $avgR(1\sim15)=77.7$  TM30:  $R_f=84$ ,  $R_g=95$   
 GAI:  $GAI\_BB\_8=96.6$ ,  $GAI\_BB\_15=104.7$ ,  $GAI\_EES=54.5$   
 R1 =82 R2 =93 R3 =95 R4 =81 R5 =83 R6 =92 R7 =80 R8 =58  
 R9 =8 R10=84 R11=80 R12=73 R13=85 R14=98 R15=74  
 Color Quality Scale:  $Q_a=82.6$ ,  $Q_f=84.1$ ,  $Q_p=84.1$ ,  $Q_g=91.3$   
 Q1 =78 Q2 =94 Q3 =84 Q4 =79 Q5 =83 Q6 =84 Q7 =84 Q8 =86  
 Q9 =95 Q10=91 Q11=87 Q12=83 Q13=82 Q14=72 Q15=74



**Photometric Parameters**

Luminous Flux: 1922.9 lm Efficiency: 149.02 lm/W Radiant Power: 5.825 W  
 Total mains efficacy: 137.99 lm/W Energy Efficiency Class: D (EU 2019/2015)

**Electric Parameters**

Voltage: 24.000V Current: 0.5377A Power: 12.90W  
 Power Factor: 1.0000 Frequency: 0.00Hz

**Test Infomation**

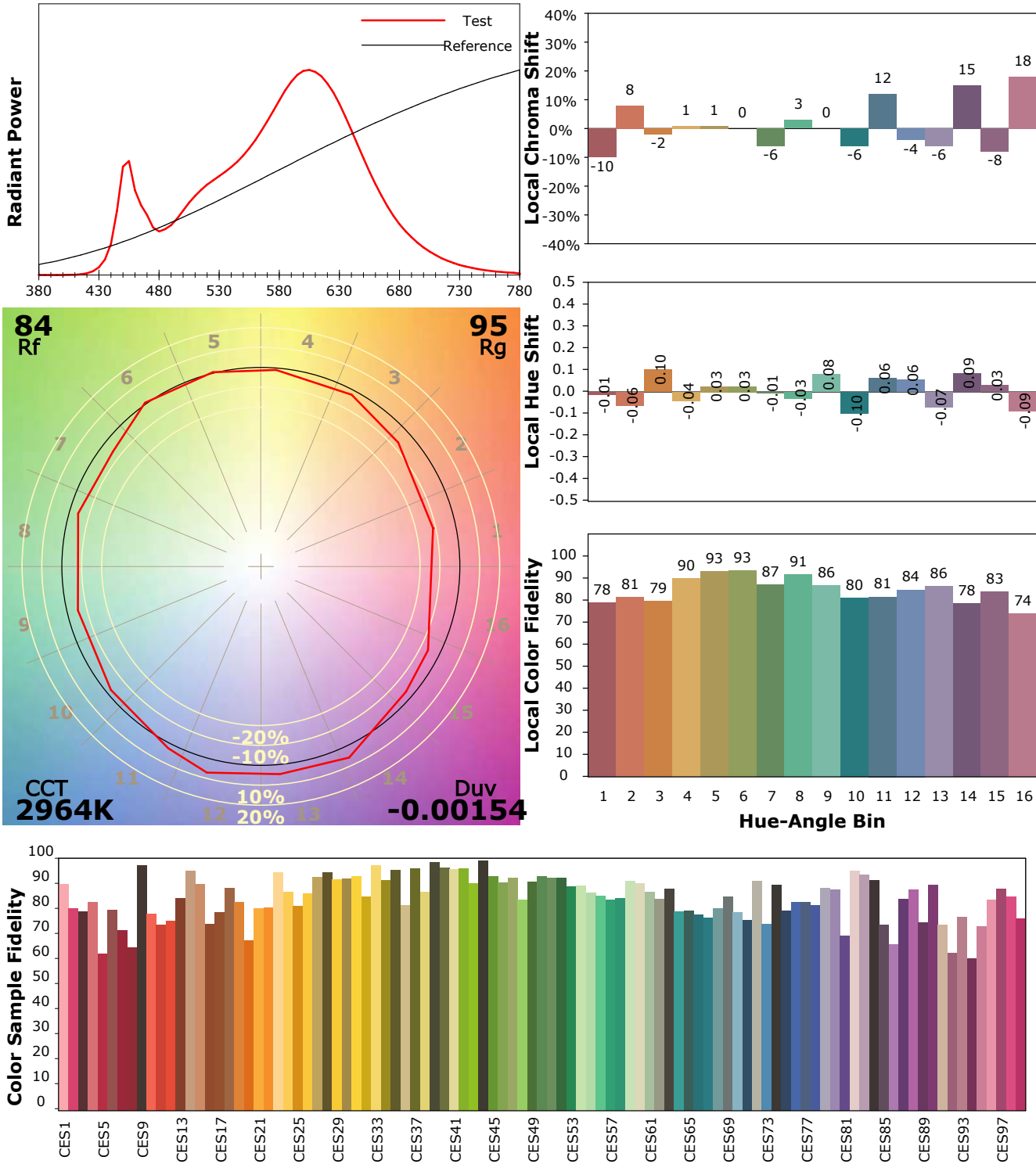
Scan Range: 380~800:1nm Photometric Method: sphere-spectroradiometer  
 Stabilization Time: 60 Sec ALC.: 1.0000 Photometric Condition: Sphere diameter: 1.50m, 4PI  
 Max of Signal: 47078 (2231) CCD Integration Time: 379.49 ms

**IES TM-30-18 Color Rendition Report**

**Product Information**

Product Category: LED STRIP  
 Product Spec: 21059602440549  
 Manufacturer: TECSOLELED S.L.

Product Type: LED STRIP  
 Product Number: 279  
 Buyer: TECSOLELED S.L.



Condition: Tx:20.5'C, Ti:19.4'C, R.H.:60%  
 Test Lab: TECSOLELED S.L.  
 Operator: JORDAN GIL DIAZ

Test Device: Inventfine CMS-2S (Plus)  
 Test Time: 2021-10-29 13:29:42  
 Inspector: